

# Serenade® Roman and Roller Shades &

*Reference Guide*



**FEATURING**  
Motorized and Serenade Designer  
Valance Upgrades



**Effective June 1, 2008**

Not a suggested price list.  
Prices are subject to change without notice.

## Serenade Roman Shades

### Roman Shade Specifications

<b>Standard Rectangular Sueded Impressions</b>	<b>Width</b> Min. 13½" Max. 52"	<b>Length</b> Min. 18" Max. 108"
<b>Shangri-La</b>	Min. 13½" Max. 56"	Min. 18" Max. 108"
<b>Madrigal</b>	Min. 13½" Max. 64"	Min. 18" Max. 108"
<b>Astrelle, Bora Bora Light Filtering, Polynesian Sands, Sorrento Blackout, South Pacific Stripe, Tahitian Woods, Tasmine Linen, Torino Marble and Toulouse Light Filtering</b>	Min. 13½" Max. 68"	Min. 18" Max. 108"
<b>Bora Bora Blackout, Torino Marble Blackout and Toulouse Blackout*</b>	Min. 18" Max. 68"	Min. 18" Max. 90"
<b>SilverScreen™*</b>	Min. 18" Max. 90"	Min. 18" Max. **
<b>Phifer SheerWeave®*</b>	Min. 18" Max. 92"	Min. 18" Max. **
<b>Contessa, DaVinci, Lucca, Mirabella, Missama Leaf, Rimini Weave, Sorrento Light Filtering, Tranquil Sheers and Victoria</b>	Min. 13½" Max. 94"	Min. 18" Max. 108"

\* Bora Bora Blackout, Torino Marble Blackout, Toulouse Blackout, SilverScreen and Phifer SheerWeave are fabricated exclusively with the Omni-Rise™ Continuous Cord Loop System.

Omni-Rise Shades under 24" wide have a maximum length of 60". Omni-Rise Shades over 24" wide have a maximum length of 108".

\*\* The maximum length of SilverScreen™ and Phifer SheerWeave® shades varies with the shade style (Classic Tear Drop or Flat Panel).

### Roman Shade Specifications continued

<b>Top Down - Bottom Up (Duofold)</b>	<b>Width</b> Min. 13½" Max. 48"	<b>Length</b> Min. 18" Max. 108"
Top Down - Bottom Up is only offered with the standard Universal Hardware System.		
<b>Motorization*</b>	<b>Width</b> Min. 30" Max. *	<b>Length</b> Min. 18" Max. 108"

\* Omni-Rise head rail is required for motorization.

\*\* The maximum width of an Motorized Serenade Shade varies with fabric.

### Omni-Rise Continuous Cord Loop

Min. 18"*	Min. 18"
Max. 94"***	Max. 108"

\* Omni-Rise Shades under 24" wide have a maximum length of 60". Omni-Rise Shades over 24" wide have a maximum length of 108".

\*\* The maximum width of an Omni-Rise Shade varies with fabric.

### Two On One\* Head Rail

<b>Standard Rectangular Head Rail</b>	Min. 27" Max. 120"	Min. 18" Max. 108"
---------------------------------------	-----------------------	-----------------------

<b>Omni-Rise Head Rail</b>	Min. 36"*** Max. 120"	Min. 18" Max. 108"
----------------------------	--------------------------	-----------------------

\* The Two On One head rail option is available in Classic Tear Drop Style only.

\*\* Minimum width of any single panel is 18". Maximum width of any single panel varies with fabric.

### Finished Dimensions for Serenade Roman Shades

#### Inside Mount

- Width: ordered width minus 3/8"
- Length: plus or minus 1/8"

#### Outside Mount

- Width: ordered width
- Length: plus or minus 1/8"

### Sorrento Blackout Fabric

The following Sorrento fabrics are now available with blackout liner for roman and roller shades.

8171025DK	Chocolate	8171021DK	Jasmine
8171000DK	White	8171022DK	Latte
8171019DK	Navy		

Use the existing Sorrento deck within your Fabric Solutions sample book featuring Serenade Roman and Roller Shades.

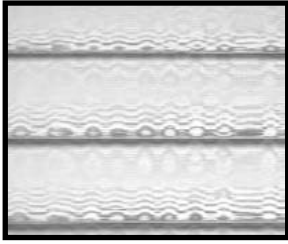
### SilverScreen Fabrics

The following additional SilverScreen fabrics are available as Serenade Roman Shades. Order a SilverScreen sample card (stock number 519221SS10) to view all available SilverScreen fabrics.

Dark Beige	ED04	Bronze	EB03
Chocolate Brown	EB04	Misty Grey	EC01
Steel Grey	EC02		

## Serenade Roman Shades Roman Shade Style Options

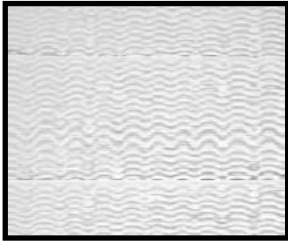
### Classic Tear Drop Panel Style



Classic Tear Drop Roman Shades incorporate the sculptural qualities of a traditional Roman shade to add dimension and interest to your windows. When raised, the fabric folds gather at the head rail. Classic Tear Drop Shades are available as Two-on-One head rail shades.

All Serenade Classic shades feature a spacer clip and bead cord. The clip slides in from the end of the rib and ensures a permanent hold. The pitched bead cord engages within the clip, setting a secure hobble.

### Flat Panel Style



Flat Panel Roman Shades offer a tailored look. In the lowered position, the fabric hangs smoothly. When raised, the folds gather at the head rail. A matching 3" fabric valance is included with every shade.

Comfortex is unable to align the fabric folds on flat panel shades.

### Standard Rectangular Shades



- Standard Rectangular Shades utilize the Universal Hardware System.

- Standard Rectangular Shades are available in Classic Tear Drop and Flat Panel styles.

- Motors are not available with Universal Hardware.

- A matching 3" fabric valance is included. Designer Valance Option is available.

- Most Serenade fabrics, but not all, feature a white backer. Be sure to reference your Serenade sample book before ordering. All cords and rib fabric support system are white.

### Top Down-Bottom Up (Duofold) Shades



- Top Down - Bottom Up Shades are designed to maintain privacy while still allowing an outside view.

- Top Down - Bottom Up shades utilizes the Universal Hardware System.

- The Top Down - Bottom Up option is available with Classic Tear Drop and Flat Panel styles.

- A matching 3" fabric valance is included. Designer Valance Option is

available.

- Most Serenade fabrics, but not all, feature a white backer. Be sure to reference your Serenade sample book before ordering. All cords and rib fabric support system are white.

## Omni-Rise Continuous Cord Loop System Shades



- Omni-Rise has an integrated clutch locking system that utilizes a continuous loop pull cord. The shade will automatically stop and lock in position when the cord is released.

- Omni-Rise is available in both the Classic Tear Drop and Flat Panel Styles.

- Sunscreen and Blackout fabrics are only available with the Omni-Rise Continuous Cord Loop System.**

- The Top Down - Bottom Up option is not available with the Omni-Rise Hardware System.

- A matching 3" fabric valance is included. Designer Valance Option is available.

- Motors are available with Omni-Rise Hardware. See pages 14-15 for more information.

- Most Serenade fabrics, but not all, feature a white backer. Be sure to reference your Serenade sample book before ordering. All cords and rib fabric support system are white.

### Cord Lengths for Omni-Rise Shades

Cord lengths on Omni-Rise Shades are available in lengths from 2' to 8' at 1' intervals. Standard loop sizes are as follows:

Shade Length	Standard Loop
13½" to 24"	1' (12")
24⅞" to 48"	2' (24")
48⅞" to 72"	3' (36")
72⅞" to 96"	4' (48")
96⅞" to 120"	5' (60")

- The continuous cord loop can be ordered in custom lengths in 1' increments only. Maximum cord length is 8'.

### Two On One Shades



- Two On One Head Rail Shades are available with standard Universal Hardware or Omni-Rise System.

- Two On One Head Rail Option is available only with Classic Tear Drop Design.

- A matching 3" fabric valance is included with every shade. Designer Valance Option is available.

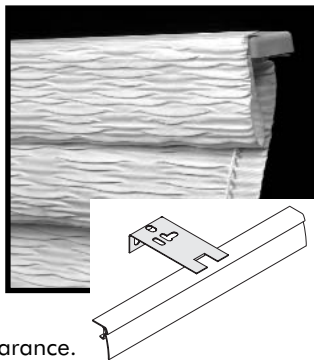
- Motors are available with Two On One Shades.

- Most Serenade fabrics, but not all, feature a white backer. Be sure to reference your Serenade sample book before ordering. All cords and rib fabric support system are white.

## Roman Shade Valance Options

### Standard Valance

Each Serenade Shade, regardless of hardware system, comes standard with its own 3" matching fabric valance without returns. The valance is attached to the headrail using valance brackets for a secure hold and easy installation. The valance bracket nests between the shade bracket and window sill or wall. When the shade is raised, the fabric gathers beneath the valance for a unique, stacked appearance.



### Designer Valance Option

You may upgrade to a 3½" tall Serenade Designer Valance with optional returns for any shade. Serenade Designer Valances are mounted by installing a valance bracket that nests between the head rail bracket and the window frame or wall. The valance bracket works with both the Standard Universal and Omni-Rise hardware brackets and is mounted in conjunction with these brackets.



## Serenade Designer Valance Specifications

The Serenade Designer Valance measures 3½" high.

Maximum width of a single Serenade Designer Select Valance depends on the selected fabric. The maximum width of the valance is the ordered width PLUS 1" PLUS the width of both returns.

### Inside Mount:

Valance will measure order width less 1/8".

Valance will not have returns

**Please Note:** Your valance will only be flush with your wall if the shade is recessed 3". For other depth installations, it is recommended that you order custom returns.

### Outside Mount:

Valance will measure the ordered width plus 1".

You must specify the return size desired when ordering. Minimum return size is 1" and maximum size is 5¼".

### Custom Valance and Returns:

Valance will measure the ordered width plus 1".

You must specify the return size desired when ordering. Minimum return size is 2⅛" and maximum size is 5¼".

**Please Note:** The distance from the back of the bracket to the front of the valance measures 3". See Figure A and B to help you calculate your required return size.

## Serenade Designer Valance Measurement Instructions

- Valances and returns are measured from the outside wall of the valance.
- Comfortex strongly recommends measuring for the exact size of the valance needed when ordering the Serenade Designer Valance.

## Serenade Designer Valance Measurement Instructions continued

### Valance Returns

- Returns can be cut as small as 2⅛", with maximum length of 5¼".
- **Custom Returns:** To determine a custom return length, add the component dimensions (mounting brackets, etc.) up to the wall. Subtract the measurements from any protrusions (molding, etc.).

**Please Note:** When ordering custom returns, the Serenade Designer Valance will measure the ordered width plus 1".

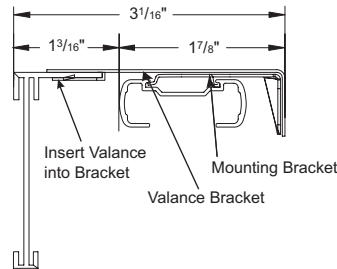


Figure A

Serenade Designer Valance with Universal Hardware

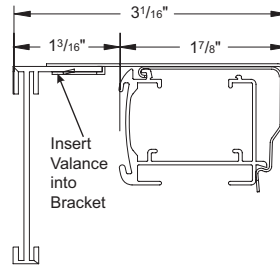


Figure B

Serenade Designer Valance with Omni-Rise Hardware

## Maximum Width of Serenade Designer Select Valances

Maximum width of a single Serenade Designer Select Valance is the shade width PLUS 1" PLUS the length of both returns.

Fabric Collection	Maximum Width
Astrelle	68"
Bora Bora (All)	68"
Contessa	94"
DaVinci	94"
Lucca	94"
Madrigal	68"
Mirabella	94"
Missama Leaf	94"
Phifer SheerWeave® (All)	92"
Polynesian Sands	68"
Rimini Weave	94"
Shangri-La	54"
SilverScreen™	90"
Sorrento Blackout	68"
Sorrento Light Filtering	94"
South Pacific Stripe	68"
Sueded Impressions	52"
Tahitian Woods	68"
Tasmine Linen	68"
Torino Marble (All)	68"
Toulouse (All)	68"
Tranquil Sheers	94"
Victoria	94"

## Serenade Roman Shades Motorized Roman Shades

Serenade Roman Shades are motorized with the Somfy™ Radio Technology (RTS) System. The motors will fully operate the shades with radio frequency technology.

**Omni-Rise Hardware and minimum width of 30" is required for motorization.**

### Surcharges

The motor surcharge for Serenade Roman Shades is \$596 per shade (in addition the Omni-Rise Surcharge).

The Serenade Roman Shade Motorized Lift System includes a standard battery wand with eight AA lithium batteries. The remotes, wall switches and timers are sold separately and can be used in conjunction with one another. Prices are as follows:

#### Battery Wand Upgrades

- 48" Extension Wire: \$24
- 96" Extension Wire: \$35

#### Hand Held Remotes

- RTS 1 Channel Remote: \$169
- RTS 5 Channel Remote: \$212

#### Wireless Wall Switches

- RTS 1 Channel Wall Switch, White: \$397
- RTS 1 Channel Wall Switch, Ivory: \$397
- RTS 5 Channel Wall Switch, White: \$418
- RTS 5 Channel Wall Switch, Ivory: \$418

#### Timers

- RTS System Wireless Timer: \$430
- RTS System Wireless Timer with Sun Sensor: \$648

#### DC Power Supply

- 12 Volt DC Power Supply: \$184

**ALL STANDARD SERENADE DISCOUNTS APPLY TO SERENADE MOTORIZED LIFT SYSTEM PRICING.**

## How to Price a Serenade Roman Shades with Lift Motors

### Example

Lucca Classic Style at 36" x 48":	\$413
Omni-Rise Surcharge	\$56
Lift System Surcharge:	\$596
Surcharge for 5 Channel Remote:	\$212
Surcharge for RTS System Wireless Timer:	\$430
<b>Total charge:</b>	<b>\$1707</b>

**ALL STANDARD SERENADE DISCOUNTS APPLY TO SERENADE MOTORIZED LIFT SYSTEM PRICING.**

### Mounting Requirements For Motorized Shades

No special installation hardware or wiring requirements are needed to install motorized Serenade Roman Shades, see page 16 for mounting information.

## Battery Wand

### Mounting Options

The battery wand comes with two mounting options:

- **Head rail mount:** Battery wand clips are mounted on the back of the Serenade head rail using a high temperature pressure sensitive adhesive.
- **Wall mount:** Battery wand clips are mounted to the wall.

The battery wand measures 17" and comes with eight lithium batteries and is white in color. The shade must be removed from window to change batteries.

Extension wires are available at 48" and 96" for use with the battery wand.

### Battery Life

The battery life will vary based on the type of window covering selected, the size and weight of the window covering and the number of times you operate the shade on a daily basis.



Battery Wand

For example, a 36" x 60" single honeycomb shade operated twice daily will have a battery life which lasts up to 18 months.

### Battery Replacement

Eight lithium batteries are included with the wand. Recommended replacement batteries are Energizer® AA lithium. These batteries are commonly found in department stores, home improvement centers, grocery and hardware stores.

### Remote Options

There are two remote options Both are available with 1 or 5 channel options. Please specify when ordering:

- Hand Held
- Wall Switch

#### Hand-Held Remote Option

The 1 Channel RTS Remote will operate all of the shades simultaneously.

The 5 Channel RTS Remote can operate up to five shadings or groups of shadings individually. When ordering, please specify which channels are assigned to each shade.

RTS 1 Channel Remote



RTS 5 Channel Remote



The remote control utilizes one 3V lithium battery (CR2430). Batteries are included.

#### Wall Switch Option

The RTS System has a wall switch option upgrade. The wall switch works just like a light switch to operate your shades. The switch is easy to install with an standard single gang electrical box and does not require any wiring.

There are two wall switch options:

- 1 Channel
- 5 Channel

Please specify when ordering.

The 1 Channel RTS Wall Switch will operate all of the shades simultaneously. The 5 Channel RTS Wall Switch can operate up to five shades or groups of shades individually.

The wall switch is available in two colors: white and ivory. Please specify when ordering.



RTS 1 Channel Wall Switch



RTS 5 Channel Wall Switch

Overall dimensions: Length: 4 1/2" Width: 2 3/4" Depth: 1 1/4"  
RTS Wall Switches use one 3V lithium battery (CR2430). Batteries are included.

### RTS System Wireless Timer

The RTS System Wireless Timer allows you set specific times for your shades to be raised or lowered. The Wireless Timer can be programmed to operate at the same time each day or different times every day. It has a security function that will raise or lower shades randomly to give the impression of an occupied home. Commands are transmitted via radio, so external wiring is not necessary.



RTS System Wireless Timer

Overall Dimensions: Length and Width: 3 1/8" Depth: 1"  
Wireless Timers use two 1.5V DC (AAA) batteries. Batteries are included.

#### RTS System Wireless Timer with Sun Sensor

The RTS System Wireless Timer with Sun Sensor has the same features as the same as the timer shown above, but can also be programmed to raise and lower your shades according to the intensity of incoming sunlight. Commands are transmitted via radio, so external wiring is not necessary.



RTS System Wireless Timer with Sun Sensor

Overall Dimensions: Length and Width: 3 1/8" Depth: 1"  
Wireless Timers use two 1.5V DC (AAA) batteries. Batteries are included.

#### DC Power Supply

12 Volt DC power supply is available and requires a standard power outlet to power the motor. The power supply must plug in to the motor.

### Battery Operated Motorized Shades Warranty

Somfy warrants their motors and motor control systems to be free from defects in materials and workmanship under normal and proper use for a period of five years starting from the date stamped on the motor. Mechanical, electrical and electronic accessories are warranted for one year from the date of invoice. Batteries are not covered by the warranty. Please see page 35 for complete Comfortex warranty information.

## Serenade Roman Shades Fabric Wrapped Bottom Rail

Fabric wrapped bottom rail is standard on all Serenade Roman Shades. The shade fabric is wrapped around an elliptical grooved rail. Two clear plastic end caps secure the fabric in place. The result is an attractive look which enhances the overall appearance of the shade.

### Serenade Fabric

- Serenade fabrics are available as custom cut or fabric by the yard for interior accents. For pricing, see page 29.
- Select Serenade fabrics are available with a blackout option. Blackout fabrics come with an opaque liner adhered to the back. Testing has shown these blackout fabrics to block 99% of all light.
- For specific features of Phifer SheerWeave and SilverScreen fabrics, see pages 26-27.
- Most Serenade fabrics, but not all, feature a white backer providing a neutral exterior appearance. Be sure to reference your Serenade sample book before ordering. All cords and rib fabric support system are white.

The following fabrics do not have white liner.

SilverScreen	Phifer SheerWeave (All)
Polynesian Sands	South Pacific Stripe

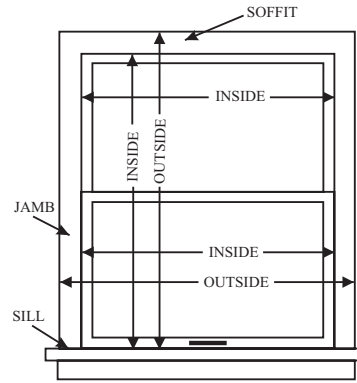
### Roman Shade Stack Height

Stack height is approximate and may vary with fabric type.

Shade Drop (Inches)	Stack Drop (Inches)	Shade Drop (Inches)	Stack Drop (Inches)
18	7 1/4	66"	9 1/4
24"	7 1/2	72"	9 1/2
30"	7 3/4	78"	10
36"	8	84"	10 1/4
42"	8 1/4	90"	10 1/2
48"	8 1/2	96"	10 3/4
54"	8 3/4	102"	11
60"	9	108"	11 1/4

### Roman Shade Mounting Information

- Minimum shallow mounting surface: 3/4"
- Minimum inside mount with Omni-Rise: 1 3/4"
- Minimum outside mounting surface: 1/2"
- Minimum flush inside mount with standard valance: 2"
- Minimum flush inside mount with Designer Valance with Universal and Omni-Rise Hardware: 3"



### Measuring Instructions for Roman Shades

**Comfortex accepts measurements down to 1/8" increments.** Measurements with 16th (ex. 1/16") increments will not be accepted.

#### Inside Mount

Measure across the width of your window opening at three places: top, middle, and bottom. Measurements should be taken within the window jamb. Provide the smallest of the three measurements to Comfortex. Comfortex will make the necessary deductions to fit in your window opening. Comfortex will deduct approximately 3/8" for clearance.

Measure the length of the window opening from the soffit to the surface of the window sill in two places. Use the smaller of these two measurements.

#### Outside or Projection Mount

Measure the exact width and length of the area to be covered. On the width, many prefer to measure the exact width of the opening and add 4" (2" to each side) to ensure privacy.

Projection brackets allow shades to be mounted up to 4" away from the mounting surface. Please specify projection mount when ordering. Projection mounts are recommended for outside mounts only.

Be sure to take into consideration any obstructions such as window trim, molding, locks and window cranks.

#### Hardware

**Hold Down Brackets:** Serenade hold down brackets are made of a clear plastic which fit into holes in the endcap of the bottom rail.

**Extension Brackets:** Extension or "L" brackets are available which can be used to project the back of the shade from the mounting surface.

**Spacer Blocks:** Spacer blocks project the shading 3/8" from the mounting surface. Use spacer blocks to obtain clearance when obstructions, such as window cranks or door handles, obstruct the movement of the shading.



### Serenade Roman Shade Features at a Glance

- Choose from the Classic Tear Drop or Flat Panel shade designs to enhance the overall look of your windows.
- Select from an extensive collection of fabrics, including light filtering and blackout styles, as well as contemporary fiberglass sunscreen fabrics which help insulate windows.
- Dozens of colors make up an impressive palette of muted tones, unique textures and striking hues. White backing allows for a neutral street side appearance on select collections.
- Serenade Roman Shades are built using the Universal Hardware System for years of smooth, reliable operation. The system ensures uniform folds and no fabric sagging.
- Serenade is available as Top Down - Bottom Up, and Omni-Rise hardware for maximum versatility.
- Both Serenade styles - Classic Tear Drop and Flat Panel - come complete with matching fabric valances. Upgrade to the Serenade Designer Valance for a cornice like look.
- Fabric wrapped bottom rail is standard on Comfortex Serenade Roman Shades for a soft, fabric look from top to bottom.
- Battery operated motorized Serenade Shades are available.
- Serenade fabrics can be ordered by the yard for making custom fabric accents.
- Serenade Roman Shades may be ultrasonically or traditionally cleaned to stay bright and beautiful.
- A limited lifetime warranty is our commitment to your satisfaction.

For specific features of Phifer SheerWeave and SilverScreen fabrics, see pages 26-27.



## Serenade Roller Shades Roller Shade Specifications

Standard Rectangular	Width	Length
Bora Bora Light Filtering and Blackout, Sorrento Blackout, Tasmine Linen, Torino Marble Light Filtering and Blackout and Toulouse Light Filtering and Blackout	Min. 12" Max. 68"	Min. 12" Max. 120"
Lucca, Mirabella, Missama Leaf, Sorrento Light Filtering, and Victoria	Min. 12" Max. 95"	Min. 12" Max. 120"
Tranquil Sheers	Min. 12" Max. 114"	Min. 12" Max. 120"

Cassette Head Rail	Width	Length
	Min. 12" Max. *	Min. 12" Max. 120"

UltraSleek Head Rail	Width	Length
Bora Bora Blackout, Sorrento Blackout, Tasmine Linen, Torino Marble Blackout and Toulouse Blackout	Min. 12" Max. 68"	Min. 12" Max. 72"
Bora Bora Light Filtering, Torino Marble Light Filtering and Toulouse Light Filtering	Min. 12" Max. 68"	Min. 12" Max. 84"
Missama Leaf, Sorrento Light Filtering, Victoria and Tranquil Sheers	Min. 12" Max. 84"	Min. 12" Max. 84"

## Looking for the specifications for roller shades with the following fabrics?

SilverScreen	Phifer SheerWeave (all types)
Sueded Impressions	South Pacific Stripe
Polynesian Sands	Shangri-La

Refer to the Comfortex Envision Roller Shade price list for pricing and specifications. Downloadable pdf files of the price list are available online at [www.comfortexdealers.com](http://www.comfortexdealers.com).

## Roller Shade Tube Sizes

Shades up to 84" x 84" inches in size, will feature a 1" tube.  
Shades over 84<sup>1</sup>/<sub>8</sub>" will use a 1<sup>1</sup>/<sub>2</sub>" tube.

## Finished Dimensions for Serenade Roller Shades Standard Roller

### Inside Mount

- Bracket to bracket measurement: ordered width minus <sup>3</sup>/<sub>16</sub>"
- End to end roller width: ordered width minus 1<sup>1</sup>/<sub>4</sub>"
- Fabric width: ordered width minus 1<sup>5</sup>/<sub>16</sub>"
- Bottom rail width: ordered width minus 1<sup>5</sup>/<sub>16</sub>"

### Outside Mount

- Bracket to bracket measurement: ordered width plus <sup>3</sup>/<sub>16</sub>"
- End to end roller width: ordered width minus <sup>7</sup>/<sub>8</sub>"
- Fabric width: ordered width minus <sup>15</sup>/<sub>16</sub>"
- Bottom rail width: ordered width minus <sup>15</sup>/<sub>16</sub>"

## Cassette Head Rail

### Inside Mount

- Head rail\*\* measurement: ordered width minus <sup>3</sup>/<sub>16</sub>"
- Fabric measurement: ordered width minus 1<sup>1</sup>/<sub>16</sub>"

### Side (End) Mount

- Head rail\*\* measurement: ordered width minus <sup>11</sup>/<sub>16</sub>"
- Fabric measurement: ordered width minus 1<sup>9</sup>/<sub>16</sub>"

### Outside Mount

- Head rail\*\* measurement: ordered width plus <sup>3</sup>/<sub>16</sub>"
- Fabric measurement: ordered width minus <sup>11</sup>/<sub>16</sub>"

### Exact End to End Mount

- Head rail\*\* measurement: ordered width
- Fabric measurement: ordered width minus <sup>7</sup>/<sub>8</sub>"

## UltraSleek Head Rail

### Inside Mount

- Head rail\*\* measurement: ordered width minus <sup>3</sup>/<sub>16</sub>"
- Fabric measurement: ordered width minus 1<sup>1</sup>/<sub>16</sub>"

### Side (End) Mount

- Head rail\*\* measurement: ordered width minus <sup>11</sup>/<sub>16</sub>"
- Fabric measurement: ordered width minus 1<sup>9</sup>/<sub>16</sub>"

### Outside Mount

- Head rail\*\* measurement: ordered width plus <sup>3</sup>/<sub>16</sub>"
- Fabric measurement: ordered width minus <sup>11</sup>/<sub>16</sub>"

### Exact End to End Mount

- Head rail\*\* measurement: ordered width
- Fabric measurement: ordered width minus <sup>7</sup>/<sub>8</sub>"

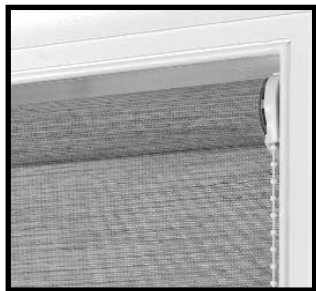
\*\* The maximum length will vary on Roller Shades due to the maximum width of the fabric.

\*\* Head rail measurements includes end caps.  
Due to variations in fabric weave and environmental conditions, the finished dimensions for both width and length may vary, plus or minus <sup>1</sup>/<sub>8</sub>", from your order measurements.

## Roller Shade Style Options

All roller shade style options feature a continuous pull cord which allows for smooth, trouble free operation.

### Standard Roller (standard)



The Standard Roller is the traditional shade design. The fabric rolls from either the back of the roller (standard) or from the front (reverse roll) to conceal the hardware.

- Comfortex uses a metal roller to support the weight of the fabric and increase durability.
- A beaded cord raises and lowers the shade.

- Motorized Lift System is **not available** with standard roller.

### Cassette Head Rail (optional surcharge)

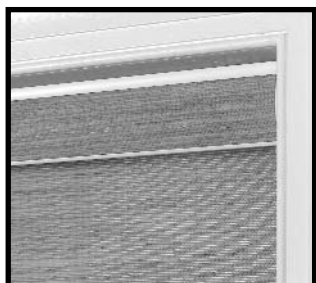


The Cassette Head Rail is white head rail includes a matching fabric strip.

- The shade is raised and lowered by either a beaded cord or polyester cord loop. Specify when ordering.
- The Cassette Head Rail has an integrated reverse roll stop.
- Motorized Lift System is available with the Cassette

Head Rail upgrade.

### UltraSleek Head Rail (optional surcharge)

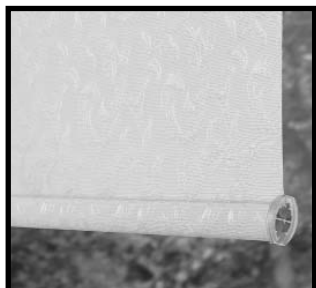


The UltraSleek Head Rail is white aluminum with matching fabric insert strip with low light gap.

- The shade is raised with a polyester cord loop.
- Motorized Lift System is **not available** with UltraSleek.
- See page 20 for **Length Restrictions** on fabrics when using UltraSleek.

- UltraSleek Head Rail **does not** have integrated reverse roll stop.

### Roller Shade Bottom Rail



All Serenade Roller Shades feature a unique bottom rail design. The shade fabric is wrapped around an elliptical grooved rail. Two clear plastic end caps secure the fabric in place. The result is an attractive look which enhances the overall appearance of the shade.

## Roller Shade Cord Information

Serenade Roller Shades are available with a choice of cord loops: the white beaded cord loop, steel beaded cord loop and the polyester cord loop.

- A beaded cord loop is the only option available with the Standard Roller. Select white or steel bead chain.
- Polyester cord loop is standard on Cassette Head Rail. The beaded (white and steel) and polyester cord loops are available with the Cassette Head Rail option.
- Beaded cord loop is standard on UltraSleek Head Rail. Select white or steel bead chain. Polyester cord loop option is **not available for UltraSleek.**

The cord loops will measure the length indicated below from 2' to 8' at 1' intervals unless otherwise specified.

Shade Length	Standard Loop
12" - 36"	2' (24")
36 <sup>1</sup> / <sub>8</sub> " - 48"	3' (36")
48 <sup>1</sup> / <sub>8</sub> " - 72"	4' (48")
72 <sup>1</sup> / <sub>8</sub> " - 96"	5' (60")
96 <sup>1</sup> / <sub>8</sub> " - 120"	6' (72")

- The continuous cord loop can be ordered in custom lengths in 1' increments only, starting at 2'. Maximum cord length is 8'.

### Reverse Roll on Serenade Roller Shades

A reverse roll option is available at no extra charge with all Serenade Roller Shade fabrics on the **Standard Roller only**. The reverse roll allows the fabric to roll off the front of the roller instead of the back, which is standard. The reverse roll conceals the hardware system for a contemporary, tailored appearance.

### New Blackout Fabric

The following Sorrento fabrics are now available with blackout liner for roman and roller shades.

8171025DK	Chocolate
8171021DK	Jasmine
8171000DK	White
8171022DK	Latte
8171019DK	Navy

Use the existing Sorrento deck within your Fabric Solutions sample book featuring Serenade Roman and Roller Shades.

## Serenade Roller Shades Motorized Roller Shades

Serenade Roller Shades are motorized with the Somfy™ Radio Technology (RTS) System. The motors will fully operate the shades with radio frequency technology. The motors fully operate the shades.

### The Cassette Head Rail Upgrade is Required for Motorization.

#### Surcharges

The motor surcharge for Serenade Roller Shades is \$612 per shade (in addition to the Cassette Surcharge).

The Serenade Roller Shade Motorized Lift System includes a standard battery wand with eight AA lithium batteries. The remotes, wall switches and timers are sold separately and can be used in conjunction with one another. Prices are as follows:

#### Battery Wand Upgrades

- 48" Extension Wire: \$23
- 96" Extension Wire: \$34

#### Hand Held Remotes

- RTS 1 Channel Remote: \$164
- RTS 5 Channel Remote: \$206

#### Wireless Wall Switches

- RTS 1 Channel Wall Switch, White: \$385
- RTS 1 Channel Wall Switch, Ivory: \$385
- RTS 5 Channel Wall Switch, White: \$406
- RTS 5 Channel Wall Switch, Ivory: \$406

#### Timers

- RTS System Wireless Timer: \$417
- RTS System Wireless Timer with Sun Sensor: \$629

#### DC Power Supply

- 12 Volt DC Power Supply: \$179

ALL STANDARD SERENADE DISCOUNTS APPLY TO SERENADE MOTORIZED LIFT SYSTEM PRICING.

## How to Price a Serenade Roller Shade with Lift Motors

#### Example

Lucca Roller Shade 36" x 48":	\$182
Cassette Head Rail Upgrade (required with motorization)	\$90
Lift System Surcharge:	\$612
Surcharge for 5 Channel Remote:	\$206
Surcharge for RTS System Wireless Timer:	\$417
<b>Total charge:</b>	<b>\$1507</b>

ALL STANDARD SERENADE DISCOUNTS APPLY TO SERENADE MOTORIZED LIFT SYSTEM PRICING.

#### Mounting Requirements For Motorized Roller Shades

No special installation hardware or wiring requirements are needed to install Serenade Roller Shades with motor, see page 24 for mounting information.

## Battery Wand

### Mounting Options

The battery wand comes with two mounting options:

- **Head rail mount:** Battery wand clips are mounted on the back of the Serenade head rail using a high temperature pressure sensitive adhesive.
- **Wall mount:** Battery wand clips are mounted to the wall.

The battery wand measures 17" and comes with eight lithium batteries and is white in color. The shade must be removed from window to change batteries.

Extension wires are available at 48" and 96" for use with the battery wand.

### Battery Life

The battery life will vary based on the type of window covering selected, the size and weight of the window covering and the number of times you operate the shade on a daily basis.



For example, a 36" x 60" single honeycomb shade operated twice daily will have a battery life which lasts up to 18 months.

### Battery Replacement

Eight lithium batteries are included with the wand. Recommended replacement batteries are Energizer® AA lithium. These batteries are commonly found in department stores, home improvement centers, grocery and hardware stores.

### Remote Options

There are two remote options Both are available with 1 or 5 channel options. Please specify when ordering:

- Hand Held
- Wall Switch

#### Hand-Held Remote Option

The 1 Channel RTS Remote will operate all of the shades simultaneously.

The 5 Channel RTS Remote can operate up to five shadings or groups of shadings individually. When ordering, please specify which channels are assigned to each shade.

RTS 1 Channel Remote



RTS 5 Channel Remote



The remote control utilizes one 3V lithium battery (CR2430). Batteries are included.

#### Wall Switch Option

The RTS System has a wall switch option upgrade. The wall switch works just like a light switch to operate your shades. The switch is easy to install with an standard single gang electrical box and does not require any wiring.

There are two wall switch options:

- 1 Channel
- 5 Channel

Please specify when ordering.

The 1 Channel RTS Wall Switch will operate all of the shades simultaneously. The 5 Channel RTS Wall Switch can operate up to five shades or groups of shades individually.

The wall switch is available in two colors: white and ivory. Please specify when ordering.



RTS 1 Channel Wall Switch



RTS 5 Channel Wall Switch

Overall dimensions: Length: 4 1/2" Width: 2 3/4" Depth: 1 1/4"  
 RTS Wall Switches use one 3V lithium battery (CR2430). Batteries are included.

### RTS System Wireless Timer

The RTS System Wireless Timer allows you set specific times for your shades to be raised or lowered. The Wireless Timer can be programmed to operate at the same time each day or different times every day. It has a security function that will raise or lower shades randomly to give the impression of an occupied home. Commands are transmitted via radio, so external wiring is not necessary.



RTS System Wireless Timer

Overall Dimensions: Length and Width: 3 1/8" Depth: 1"  
 Wireless Timers use two 1.5V DC (AAA) batteries. Batteries are included.

### RTS System Wireless Timer with Sun Sensor

The RTS System Wireless Timer with Sun Sensor has the same features as the same as the timer shown above, but can also be programmed to raise and lower your shades according to the intensity of incoming sunlight. Commands are transmitted via radio, so external wiring is not necessary.



RTS System Wireless Timer with Sun Sensor

Overall Dimensions:  
 Length and Width: 3 1/8" Depth: 1"  
 Wireless Timers use two 1.5V DC (AAA) batteries. Batteries are included.

### DC Power Supply

12 Volt DC power supply is available and requires a standard power outlet to power the motor. The power supply must plug in to the motor.

### Battery Operated Motorized Shades Warranty

Somfy warrants their motors and motor control systems to be free from defects in materials and workmanship under normal and proper use for a period of five years starting from the date stamped on the motor. Mechanical, electrical and electronic accessories are warranted for one year from the date of invoice. Batteries are not covered by the warranty. Please see page 35 for complete Comfortex warranty information.

# Serenade Roller Shades

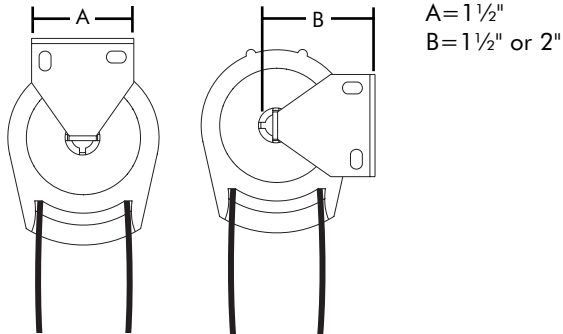
## Roller Shade Mounting Information

### Standard Roller

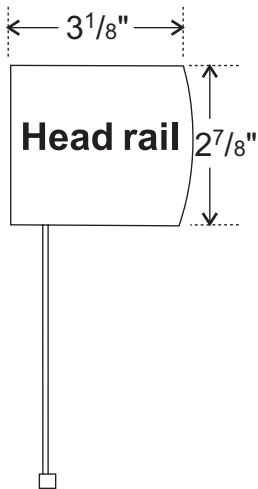
- The Standard Roller is available with two brackets in 1½" and 2" widths.
- Minimum depth for flush inside mount including installation brackets: 2½"

### Standard Roller Bracket Dimensions

Standard Roller bracket dimensions are as follows:

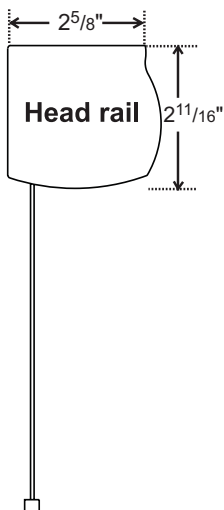


### Cassette Head Rail



- Minimum depth for flush inside mount including the installation brackets: 3¾"
- Minimum depth required for shallow mounting: ¾"
- Minimum depth for side mount: 1¼"
- Maximum shading width for side mount: 48"
- Minimum surface area required for mounting: ¾"

### UltraSleek Head Rail



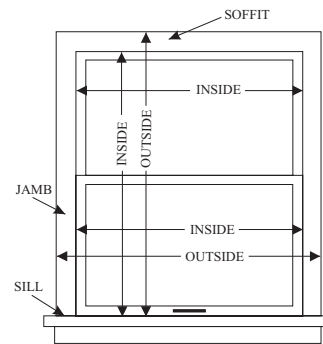
- Minimum depth for flush inside mount including the installation brackets: 2⅞"
- Minimum depth required for shallow mounting: 1⅛"
- Minimum depth for side mount: 1⅞"
- Maximum shading width for side mount: 48"
- Minimum surface area required for mounting: 1"

## Measuring Instructions for Roller Shades

### Important Measuring Guidelines

**Comfortex accepts measurements down to ⅛" increments.** Measurements with 16th (ex. ⅛") increments will not be accepted.

- Precise width and length measurements are critical. Fabric width cannot be altered after the shading is fabricated.
- Please use a metal tape measure for accuracy from home to factory.
- The head rail must be installed perfectly level and installed evenly to ensure smooth operation. On an inside mount, it is recommended that you check to see that the mounting surface is level and consistent. If your soffit needs to be leveled, this should be done before measuring.
- Serenade Roller Shades are leveled and weighted in the factory. When installed level, the fabric will not skew when raised. If the head rail is not installed level, skewing can occur that can damage the edge of the fabric. Be sure to follow the installation instructions carefully to ensure balanced operation.



### Inside Mount (IB)

Measure across the width of your window opening in three different places - top, middle and bottom. Measurements should be taken within the window jamb. Provide the smallest of the three measurements to Comfortex. Be exact. Comfortex will make the necessary deductions to fit the window opening. Measure the length of the window opening from the underside of the soffit to the surface of the window sill in two places - use the smallest of these two measurements.

### Outside Mount (OB)

Measure the exact width and length of the area to be covered. On the width, allow at least 1½" of an overlap on each side. An overlap of 3" on each side is recommended. Be sure to take into consideration any obstructions such as window trim, molding, locks and window cranks.

### Side Mount

**Side mount is not available for the Standard Roller.**

Serenade Roller Shades with the Cassette Roller may be side mounted using "L" brackets. For side mounts, follow the instructions for inside mounts. An additional 2" will be taken off the standard inside mount deduction to allow room for the "L" brackets.

The maximum shade width utilizing the side mount option is 48".

### Roller Shade Hardware

#### Extension Brackets

Extension or "L" brackets are available to project the back of the shade from the mounting surface. Those for the Standard Roller project it 2½". The extension brackets for Cassette Head Rail project it 4¼".

#### Spacer Blocks

Spacer blocks project the shading ¾" from the mounting surface. Use spacer blocks to obtain clearance when obstructions, such as window cranks or door handles, obstruct the movement of the shading.

### Serenade Roller Shades Features at a Glance

- Serenade Roller Shades combine the elegance of the Serenade fabric collection with the the proven performance of three classic hardware systems.
- The Cassette and the UltraSleek Head Rail Systems fully enclose the roller and includes a matching fabric insert.
- All roller shade systems eliminate fabric creasing.
- Serenade Roller Shades utilize a metal roller, instead of a wooden rod, to support the weight of the fabric and increase durability.
- Select from an extensive collection of fabrics, including light filtering and blackout styles, as well as contemporary fiberglass sunscreen fabrics which help insulate windows.
- White fabric backing allows for a neutral street side appearance.
- Fabric wrapped bottom rail is standard on Comfortex Serenade Roller Shades for a soft, fabric look from top to bottom.
- Battery operated motorized Serenade Shades are available.
- Serenade fabrics can be ordered by the yard for custom fabric accents.
- A limited lifetime warranty serve as a commitment to your satisfaction.

## Phifer SheerWeave Specifications

### About Phifer SheerWeave Fabrics

#### Flame Resistance

Phifer SheerWeave fabrics have passed stringent tests for flame resistant fabrics:

#### 5% and 10% Open Fabrics

- M1 (2390 Series Fabrics only)
- California U.S. Title 19 (Small Scale)
- NFPA 701-1999 TM #1 (Small Scale)
- NFPA 101 (Class A Rating)
- UBC (Class 1)

#### 14% Open Fabrics

- NFPA 701-1999 TM #1 (Small Scale)

#### Bacterial and Fungal Resistance

Phifer SheerWeave fabrics have passed the following tests for bacteria and fungal resistance:

#### 5%, 10% and 14% Open Fabrics

- ASTM-G21
- ASTM-G22

#### GreenGuard Certified

Phifer SheerWeave 2390 and 2360 series fabrics are GreenGuard certified. For more information, visit [www.greenguard.org](http://www.greenguard.org).

#### Custom Cut and Fabric by the Yard

Phifer SheerWeave fabrics are available in a custom cut fabric program. See the Comfortex Envision Roller Shade price list for more information.

## Solar Heat Control Properties of Phifer SheerWeave Sunscreen Fabrics Installed Internally, Zero-Degree Profile Angle

### Phifer SheerWeave Sunscreen 5% Open Fabrics

Style Number	Color	Solar Optical Properties *				Shading Coefficient with					
						Single		Insulating			
		TS	RS	AS	TV	1/8CL	1/4CL	1/4HA	1/2CL	1CL	1HA
P12	Oyster	27	57	16	21	0.43	0.42	0.36	0.39	0.38	0.29
P13	Oyster Beige	24	51	25	19	0.46	0.45	0.38	0.43	0.41	0.31
P14	Oyster Gray	20	45	35	16	0.49	0.48	0.40	0.46	0.44	0.32
Q20	Beige	19	44	37	16	0.50	0.48	0.40	0.46	0.44	0.32
V22	Charcoal Gray	12	8	80	14	0.73	0.69	0.51	0.68	0.62	0.42

### Phifer SheerWeave Sunscreen 10% Open Fabrics

Style Number	Color	Solar Optical Properties *				Shading Coefficient with					
						Single		Insulating			
		TS	RS	AS	TV	1/8CL	1/4CL	1/4HA	1/2CL	1CL	1HA
P12	Oyster	27	57	16	21	0.43	0.42	0.36	0.39	0.38	0.29
P13	Oyster Beige	24	51	25	19	0.46	0.45	0.38	0.43	0.41	0.31
P14	Oyster Gray	20	45	35	16	0.49	0.48	0.40	0.46	0.44	0.32
Q20	Beige	19	44	37	16	0.50	0.48	0.40	0.46	0.44	0.32
V22	Charcoal Gray	12	8	80	14	0.73	0.69	0.51	0.68	0.62	0.42

### Phifer SheerWeave Sunscreen 14% Open Fabrics

Style Number	Color	Solar Optical Properties *				Shading Coefficient with		
						Single	Insulating	
		TS	RS	AS	TV	1/8CL	1/4CL	1/4HA
P01	Pearl White	24	62	41	20	0.38	0.38	0.34
Q01	Mushroom Sand	23	46	31	21	0.49	0.48	0.40
Q02	Custard Cream	24	52	24	22	0.45	0.44	0.38
Q17	Pearl Sand Dollar	26	40	34	24	0.54	0.52	0.42
V01	Pale Gray	20	42	38	19	0.51	0.50	0.41
V02	Ninja Gray	14	10	76	16	0.72	0.68	0.50

\* Performance evaluations conducted by Matrix, Inc. of Mesa, Arizona.

TS =	Solar Transmittance	1/8CL =	1/8" Clear Glass	1/2CL =	1/2" Clear Glass
RS =	Solar Reflectance	1/4CL =	1/4" Clear Glass	1CL =	1" Clear Glass
AS =	Solar Absorptance	1/4HA =	1/4" Heat Absorbing Glass		
1HA =	1" Heat Absorbing Glass	TV =	Visual Transmittance		

The solar optical properties are used to calculate the shading coefficient. The shading coefficient represents the percentage of solar heat gain that is transmitted to the interior through the glass and shading system. Darker colors provide maximum glare reduction and visibility.



### Understanding Solar Optical Properties of Phifer SheerWeave

Phifer SheerWeave Sunscreen fabrics dramatically increase the energy efficiency of your windows and make your home more comfortable in any climate, any time of year. Phifer SheerWeave Sunscreen fabrics reduce solar heat gain in the summer and reduce heat loss through windows and glass doors in the winter. You save on expensive heating and cooling costs while saving energy beautifully.

Serenade Roman Shades with Phifer SheerWeave Sunscreen fabrics are custom manufactured to fit any window or door in your home or business with complete energy control while maintaining a full view to the outside.

Serenade Roman Shades with Phifer SheerWeave Sunscreen fabrics are designed to last year after year and maintain a full view to the outside.

They are designed to:

- Improve living and working environmental conditions by increasing your comfort.
- Reduce eye-straining glare while maintaining the full view out.
- Reduce utility costs.
- Reflect harmful fade-causing ultraviolet rays, protecting interior furnishings from sun damage.

### Definitions of Terms for Solar Optical Properties

**Solar Optical Properties:** Refer to the solar transmittance, solar reflectance and solar absorbance of the Phifer SheerWeave Sunscreen fabrics. This is not in relationship to the application of the fabric materials.

**(TV) Visual Transmittance:** Measures glare. The number is a ratio of the amount of the total visible solar energy that passes through the glass and Phifer SheerWeave Sunscreen fabrics combined. Light colors have high TV factor. Dark colors have lower TV factor.

**(TS) Solar Transmittance:** The percentage of the amount of solar energy allowed to pass through the Phifer SheerWeave fabrics to the total amount. TS measures the percentage of solar energy passing through the fabric.

**(RS) Solar Reflectance:** The percentage of the amount of solar energy that is reflected or bounced off the Phifer SheerWeave Sunscreen fabrics to the total amount of solar energy falling on the shade. RS measures the percentage of solar energy reflected by the fabric.

**(AS) Solar Absorptance:** The percentage of the amount of solar energy that is absorbed by the Phifer SheerWeave fabrics, to the amount of total solar energy falling on the shade. AS measures the percentage of solar energy that the Phifer SheerWeave Sunscreen fabrics absorb.

TS = Solar Transmittance

RS = Solar Reflectance

AS = Solar Absorptance

Phifer SheerWeave Sunscreen fabrics reflect a percentage of the solar energy and absorb a percentage of the total solar energy. The energy that gets through the fabric and glass combined is the TS (Solar Transmittance). These three properties will always total 100%.

Light colors reflect more heat and have lower shading coefficients when used on the interior. Darker colors reduce glare and brightness while allowing for a better view. These factors and interior design considerations must be considered in fabric density and color selection.

**(SC) Shading Coefficient:** The percentage of solar heat gain through a combination of glass and Phifer SheerWeave Sunscreen fabric. When used on the interior, light colors have lower shading coefficients and dark colors have higher shading coefficients. A lower shading coefficient means lower heat gain (better thermal performance).

**(OF) Openness Factor:** The amount of open space in the material versus the amount closed or the density of weave (percentage of total surface area of fabric that is open). Selecting the proper density is affected by the sun exposure (east, west, north, south), whether the view is obstructed (by trees or other buildings), the type of glass, the sensitivity of the end user or the activity performed in the area.

**UV Reduction:** Ultraviolet reduction is directly related to openness factor (example: a 5% open fabric blocks 95% of the UV). UV rays are the damaging rays of the sun that fade carpet, home furnishings and furniture.

**Reflecting Heat:** The Phifer SheerWeave Sunscreen fabrics reflect and absorb heat before it even hits your windows, which prevents this energy from heating up the glass and transferring into the room you're trying to cool. This reduces the amount of heat that the air conditioning unit has to remove from the house.

**Visibility:** The amount of visibility depends on the percentage of reduction you are seeking. The higher the percentage reduction, the less visibility is retained.

### Fabric Composition

- **5% and 10% Open Phifer SheerWeave Sunscreen Fabrics** are 35% fiberglass and 65% vinyl on fiberglass.
- **14% Open Phifer SheerWeave Sunscreen Fabrics** are woven with horizontal threads of 31% polyester and 69% vinyl on polyester and with vertical threads of 35% fiberglass and 65% vinyl on fiberglass.

## SilverScreen Specifications

### About SilverScreen Fabrics

#### SilverScreen Benefits

SilverScreen fabrics combines excellent:

- Visual comfort (limited glare)
- View through
- Thermal comfort (better temperature and draft control)

SilverScreen fabrics are composed of PVC coated fiber glass and are coated on one side with an ultra-fine layer of aluminum; thereby dramatically improving the solar energy performance of windows while demonstrating excellent corrosion resistance properties. Shades built with SilverScreen fabrics add contemporary style to architectural design of interiors and exteriors of buildings.

**SilverScreen fabrics are flame resistant and adhere to NFP 92503 Classification M1 standards.**

#### SilverScreen Colors

The visual glare and heat gain properties of common screens depend on the color of the screen. Thanks to the aluminum layer on the reverse side of SilverScreen fabrics, these properties are practically independent of the color of the screen.

#### Fabric Specifications

Below are basic fabric specifications measured for color Black EB01:

Openness factor:	4%
Light transmission:	5%
Transmission solar radiation:	5%
Reflection solar radiation aluminum:	75%
Colorfastness ISO105-B02 Metal side:	8
Environment Öko tex standard:	100
Aluminum adhesion ISO 2409 classification:	0
Formaldehyde free	